



UK Trade
& Investment



To find out more, scan
this code with your
smart phone

www.ukti.gov.uk
+44(0)20 7215 5000

UK Trade & Investment is the Government Department that helps UK-based companies succeed in the global economy. We also help overseas companies bring their high-quality investment to the UK's dynamic economy acknowledged as Europe's best place from which to succeed in global business.

UK Trade & Investment offers expertise and contacts through its extensive network of specialists in the UK, and in British embassies and other diplomatic offices around the world. We provide companies with the tools they require to be competitive on the world stage.

For further information please
contact the UKTI LSIO team at:

T: +44 (0)20 7333 5442
E: enquiries@ukti-invest.com
W: www.ukti.gov.uk/lifesciences
TW: @UKTI_LSIO

Published in January 2014
by UK Trade & Investment
© Crown Copyright
URN XX/XXXXX

www.ukti.gov.uk/lifesciences

Part of the UK Government's portfolio
of Solutions for Business

Whereas every effort has been made to ensure that the information given in this document is accurate, neither UK Trade & Investment nor its parent Departments (the Department for Business, Innovation and Skills, and the Foreign & Commonwealth Office) accept liability for any errors, omissions or misleading statements, and no warranty is given or responsibility accepted as to the standing of any individual, firm, company or other organisation mentioned.

How UKTI Can Help Your Business

UKTI Life Science Investment Organisation (LSIO)

UKTI has established a dedicated unit, the LSIO, to act as your interface with the UK life science sector. The LSIO is your guide to identifying research, development and delivery partners and will support you through every step of investing in and working in the UK. The UKTI LSIO team will work closely with you to understand your needs and requirements, partnering you with the right people in the UK.

**For further information please contact the
UKTI LSIO team at:**

T: +44 (0)20 7333 5442
E: enquiries@ukti-invest.com
W: www.ukti.gov.uk/lifesciences
TW: @UKTI_LSIO

INNOVATION IS GREAT BRITAIN



Unlock Your Global
Business Potential

UK Experimental Medicine
and Clinical Trials

UKTI Life Science Investment Organisation (LSIO)

Market Success

Novartis accelerates its clinical trials process by working with The NIHR Cancer Clinical Research Network in Birmingham, UK.

Early results from Novartis Pharmaceuticals UK Ltd show a 50 per cent reduction in set-up time and significant reduction in costs per patient. Importantly, for the first time ever in its Oncology Unit, Novartis UK managed to secure the enrollment of the first patient in the trial ahead of all centres participating globally.

The Experimental Cancer Medical Centres (ECMCs) Combinations Alliance and AstraZeneca are collaborating on a Phase Ib/IIa clinical trial to examine an experimental drug called AZD4547 in combination with existing therapies. The trial will be run across the UK at ECMCs at the ICR, Imperial, Cardiff, Oxford and Glasgow.



We believe that collaboration is crucial to finding solutions in the fight against cancer and are pleased to partner with others in the UK who share our dedication to bringing new medicines to patients."

**Andrew Foxley, Clinical Programme Director for
AZD4547 at AstraZeneca**

NIHR Biomedical Research Centre (BRC) in collaboration with Proteome Sciences and Merck Millipore conducted an Alzheimer's disease biomarker validation study. Preliminary data generated by the NIHR BRC for Mental Health suggest that proteins in blood may act as biomarkers that could help to identify dementia in the pre-clinical phase.



This study is a major step towards a series of simple blood tests that would facilitate the early diagnosis and management of Alzheimer's."

Christopher Pearce, CEO of Proteome Sciences

Market Opportunity

The UK offers a fast, cost-effective and high quality location for experimental medicine and later phase clinical research. This offer is supported by:

Translational research expertise and world-renowned Key Opinion Leaders (KOLs)

- **World-class** science, universities and principal investigators
- **Globally renowned** research charities such as the MRC and The Wellcome Trust commit £1 billion in annual research funding.

Unrivalled data and well-characterised patient cohorts

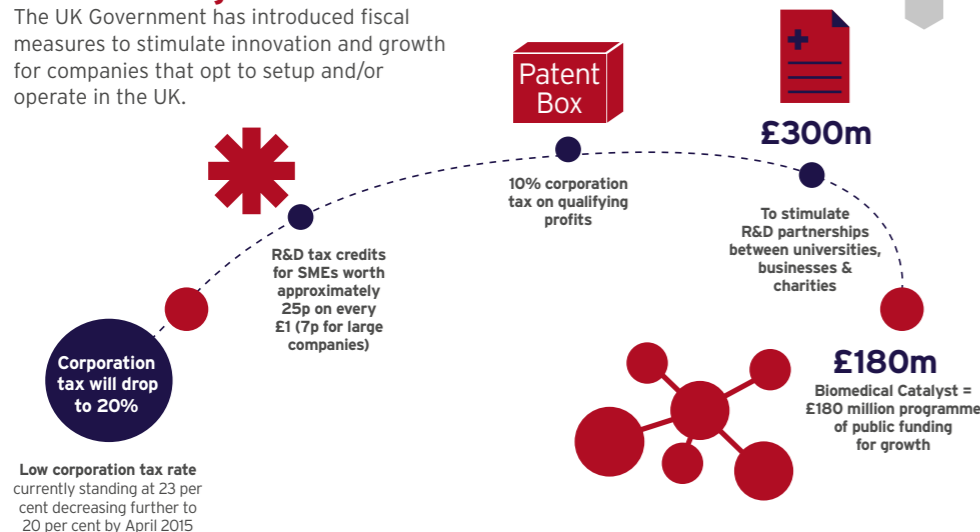
- **A National Health Service (NHS)** has more than **60 million patients**. The NHS aims to go entirely digital by 2018
- Clinical **datasets**, well-characterised patient **cohorts**, **stratification tools** and **biobanks**.

Leading translational research facilities and clinical research networks

- In England, **£500 million annually spent on National Institute for Health Research (NIHR) funded infrastructure** to support experimental medicine research, accessible via the NIHR Office of Clinical Research Infrastructure (central industry access point)
- Simplified industry access also available in **Scotland, Wales and Northern Ireland**
- Support for **complex early-stage experimental research** requiring innovative trial designs through to expert delivery of larger **late-stage clinical trials**.

Ease of Doing Business

The UK Government has introduced fiscal measures to stimulate innovation and growth for companies that opt to setup and/or operate in the UK.



Rich and Diverse Ecosystem

The UK research ecosystem supports innovation flow from discovery science through to evidence generation and uptake



Pre-clinical

Medical Research Council and Medical Research Charities
Research funding focused on the mechanisms of health and disease

The UK has the visionary science, centres of academic and clinical excellence, key opinion leaders, experienced partners, and the tools to grow your business:

- The **Medical Research Council** funds disease-focused consortia of academic and industry partners to enable translational medicine
- The **Wellcome Trust** funds both basic biomedical research and translational projects
- **Cancer Research UK and Cancer Research Technology** also provides basic research funding in oncology, offers translational funding and expert capabilities and supports patient engagement
- The **UK Health Departments** fund translational research infrastructure designed to pull innovation from the laboratory into the clinical setting.

Experimental medicine and early-phase clinical research

Translational Research Partnerships and Collaborations
Expertly delivering early stage patient studies clinical setting

UK Clinical Research Facilities and Experimental Cancer Medicine Centres
UK expert infrastructure enabling experimental medicine

Translational Research Partnerships and Collaborations offer a unique approach to drive open innovation and collaboration within the life sciences industries bringing together:

- World leading clinical research expertise
- Translational research infrastructure co-located in the hospital setting
- Well characterised cohorts of patients available for clinical development studies.

NIHR Biomedical Research Centres and Units have expert translational researchers embedded in the leading university and hospital partnerships across England.

UK Clinical Research Facilities support inpatient and outpatient clinical research studies across a wide range of disciplines, led by investigators in both adult and paediatric specialities.

UK Experimental Cancer Medicine Centres bring together experts in cancer biology with clinical researchers to speed up the flow of innovation from the lab bench to the patient's bedside.

Scotland has wide ranging expertise in experimental medicine: the **Division of Signal Transduction Therapy at the University of Dundee / MRC Protein Phosphorylation Unit** is conducting pioneering work on inhibitors of kinases and phosphatases supported by six leading pharma companies.

Wales and Northern Ireland have leading academic centres of excellence in drug discovery and provide industry with leading experimental medicine centres within leading hospital partnerships.

Later-phase clinical research

Clinical Research Networks
Embedded in the NHS supporting the delivery of multicentre clinical studies

NIHR Clinical Research Networks in England support later-phase clinical research in the NHS, giving patients access to high quality research studies and supporting the life sciences industry to develop new treatments and products.

They specialise in running multicentre trials and help industry sponsors and CROs deliver studies on-time and to target.

- **630,000 patients** were recruited in 2013 into clinical research studies. This has trebled since 2010
- **3000-4000 expertly trained research nurses** employed full-time to ensure quality and efficient commercial and academic clinical research.

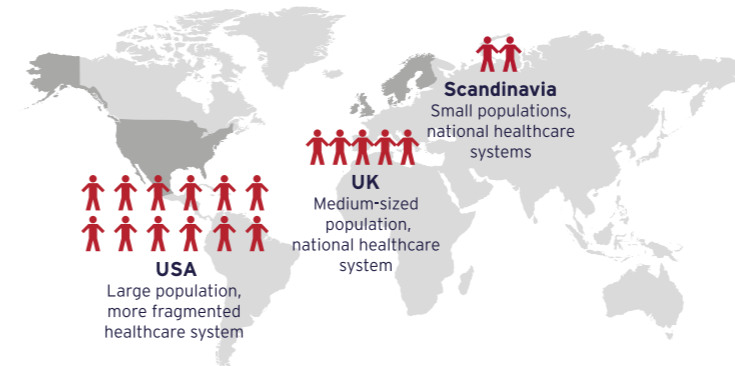
NHS Research Scotland (NRS) supports the conduct and delivery of a range of high-quality studies and offers a co-ordinated service across all clinical research activities.

Through the **Northern Ireland Clinical Research Network (NICRN)**, your business can be connected to conduct late stage clinical research. The NICRN aims to enhance the regional coordination of clinical research across Trusts and academic organisations plus improve the speed and quality of research outcomes

Health Research Wales provides detailed and efficient support to your business ranging from clinical research feasibility, costing, study setup and performance monitoring.

UK Health Data In the UK, your business will have access to unrivalled, clinically-coded health data and bio- repositories

More than 60 million people are served by a National Health System



Example data resources include:

- **UK Biobank** offers a unique resource of data and samples linked to medical histories of 500,000 adult participants
- **The Scottish Health Informatics Programme (SHIP)** tracks real time clinical information on all 239,000 people with diabetes in Scotland
- **NIHR BioResource** enables recall to clinical studies by genotype and phenotype and helps stratify and select patients for trials
- **Clinical Practice Research Datalink (CPRD)** enables observational studies, clinical trial feasibility and protocol optimisation, and post-market surveillance.